

Winter Ultra High Performance

GM605



WINTER COLLECTION FEATURES

Performance
M+S 3PMSF Rated
Labelling: E C 72-73
 Wheel Diameter
17", 18", 19", 20"
 Available Sizes
28



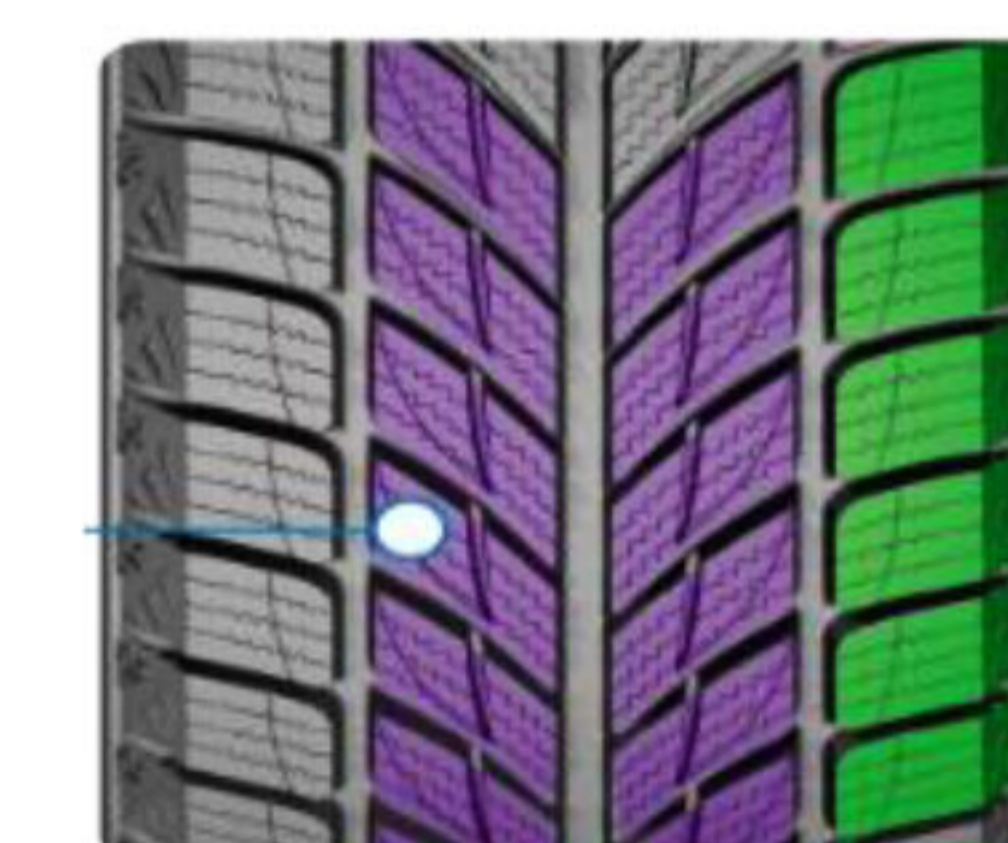
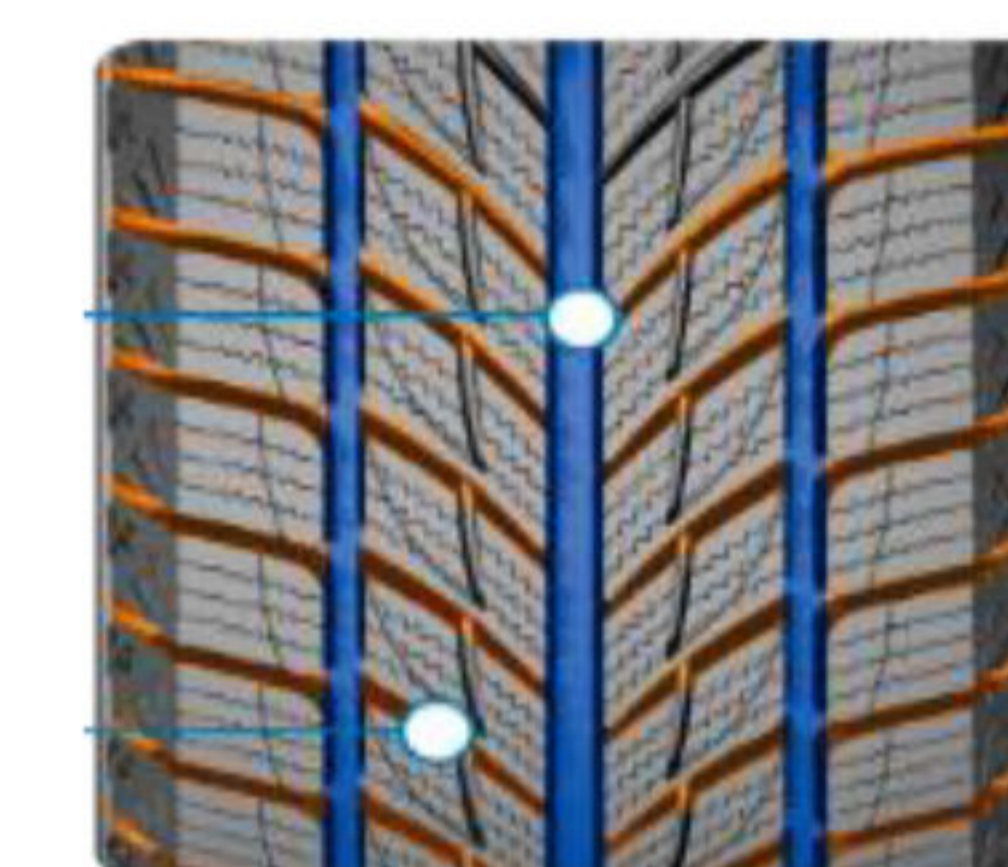
PERFORMANCE RATINGS



This studless winter ultra-high performance collection is designed for strong adhesion to snow road and braking performance, improving handling performance and ensuring safe driving

BENEFITS

- Handling Performance**
Interval arranged lateral groove design in carter part increase grip ability on snow/ice terrain, guarantees safe handling performance.
- Drainage Performance**
Wide and straight longitudinal groove design improves performance on wet ground.
- Braking Performance**
Special studless tread compound greatly improves braking performance in winter.



SIZES

17" 9 SIZES		
205/50R17	225/45R17	235/45R17
215/45R17	225/50R17	235/55R17
215/50R17	225/55R17	255/45R17

18" 7 SIZES		
215/55R18	235/55R18	255/55R18
225/45R18	245/40R18	
235/50R18	245/45R18	

19" 5 SIZES	
235/50R19	255/50R19
235/55R19	255/55R19
255/45R19	

20" 7 SIZES	
235/55R20	275/40R20
255/45R20	275/45R20
255/50R20	315/35R20
255/55R20	